



Foreign Relation Office <fro@ku.th>

## Fwd: ATTENTION : Application for student exchange at Montpellier SupAgro - Full year and Autumn semester - 2

regknw <regknw@ku.ac.th>

To: "International Affair Division, KU" <fro@ku.th>, ISC N'Game <regpwr@ku.ac.th>

Cc: "ISC Aj. Soysuda" <fhumsdn@ku.ac.th>

Thu, Mar 22, 2018 at 4:27 AM

กองวิเทศสัมพันธ์

01363

รับที่

วันที่

22 มี.ค. 2561

เวลา

10.00 น.

เลขรับที่

226

วันที่

3 มี.ค. 2561

เวลา

11.15 น.

เลขรับ

02185

วันที่

22 มี.ค. 2561

เวลา

09.30 น.

----- Original Message -----

**Subject:**ATTENTION : Application for student exchange at Montpellier SupAgro - Full year and Autumn semester - 2

**Date:**Wed, 21 Mar 2018 17:44:59 +0100

**From:**Dominique LOUETTE <dominique.louette@supagro.fr>

To:erasmus@cu.edu.tr, euoffice@ankara.edu.tr, esnankarauni@esnturkey.org, erasmus@cu.edu.tr, infooffice@uludag.edu.tr, curhan@uludag.edu.tr, nku.erasmus@gmail.com, nozer@nku.edu.tr, infoerasmus@nku.edu.tr, esamli@nku.edu.tr, zmakaraci@nku.edu.tr, mariam.japaridze@agrni.edu.ge, ntuciaee@ntu.edu.tw, a.godabrelidze@agrni.edu.ge, Genevieve.Desroches@USherbrooke.ca, Karine.R.Vezina@USherbrooke.ca, nicole.bissonnette@USherbrooke.ca, ariane.hillman@USherbrooke.ca, Madeleine.Audet@USherbrooke.ca, Anne.Lacasse@USherbrooke.ca, exchange@studyabroad.wisc.edu, dmwall@wisc.edu, cza@plantpath.wisc.edu, lparis@wisc.edu, shujen@ntu.edu.tw, yccheng@nchu.edu.tw, ntuciaee@ntu.edu.tw, "Japon,oda"@kais.kyoto-u.ac.jp, sakamoto.kiyohiko.3s@kyoto-u.ac.jp, intl-serv@www.adm.kyoto-u.ac.jp, agri-kyoumu2@mail2.adm.kyoto-u.ac.jp, hiba@kais.kyoto-u.ac.jp, fagiskm@ku.ac.th, hshimizu@kais.kyoto-u.ac.jp, wanida.kmn@gmail.com, fhuncpt@ku.ac.th, ku.oip@ku.ac.th, mangkorn.r@ku.ac.th, regtpb@ku.ac.th, agrddj@ku.ac.th, faginun@ku.ac.th, nuttakan.n@ku.ac.th, fagitbs@ku.ac.th, fecoacd@ku.ac.th, fecowdka@ku.ac.th, fagiskm@ku.ac.th, outgoing.erasmus@cu.edu.tr, incoming.erasmus@cu.edu.tr

**Cc:**Claudia MEDINA <claudia.medina@supagro.fr>, Maija MIKKOLA <maija.miikkola@supagro.fr>

Dear partners,

I have the pleasure to inform you that the application procedure for students that wish to come to **Montpellier SupAgro** in exchange program for the full year or for the autumn semester 2018/19 has started.

### Procedures

**1 - Nominate your student(s) by email, sending the name, surname, gender, date of birth and e-mail address of the student to :**

For Latin America or Asia : claudia.medina@supagro.fr

For North America or Europe : maija.miikkola@supagro.fr

**2 - Each nominated student(s) will receive a email with his/her login and password.**

**3 - Each nominated student must login and complete his/her application form ONLINE. The deadline for application is the 30th of April.**

The student will have to complete his personal information and upload the following documents: ID-photo, ID-document, Transcript of records of higher education, Language certificates in French and/or English (depending on chosen courses), Cover letter and Learning agreement.

**4 - Applications will be analyzed mid-May.**

**Observation :** for an exchange exclusively during the spring semester, the nomination and the application will have to be made the next semester, before October 15th. A message in September will give you complete information.

### Course Offers

② เรียน คณะกรรมการคณาจารย์

เพื่อโปรดพิจารณาความเป็นไปได้ในการเสนอ  
ชื่อนิสิตเพื่อเข้าร่วมกิจกรรมการแลกเปลี่ยน ณ Montpellier  
SupAgro สาธารณรัฐฝรั่งเศส ทั้งนี้ ผลเป็นประการใดขอได้  
โปรดแจ้งกองวิเทศสัมพันธ์ทราบด้วย จะขอบคุณยิ่ง เพื่อจะ  
ได้แจ้งต่อผู้ประสานงานของ Montpellier SupAgro  
อนึ่ง กองวิเทศสัมพันธ์ ขอส่งบันทึกข้อตกลงความร่วมมือทาง  
วิชาการระหว่างมหาวิทยาลัยเกษตรศาสตร์และ Montpellier  
SupAgro ให้ท่านไว้เป็นข้อมูลประกอบการพิจารณา



22 มี.ค. 2561

③ เรียน หัวหน้าภาควิชาสถิติ

เพื่อโปรดพิจารณาเสนอรายชื่อนิสิตเพื่อเข้าร่วม  
กิจกรรมการแลกเปลี่ยน ณ Montpellier SupAgro  
ประเทศฝรั่งเศส โดยแจ้งรายชื่อนิสิตมาที่ คุณรัฐพันธ์  
ภายในวันที่ 13 เมษายน 2561

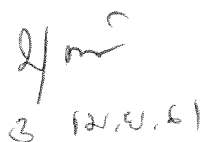


(รองศาสตราจารย์ ดร. อภิสิทธิ์ ศงสะเสน)

คณบดีคณะวิทยาศาสตร์

30 มีนาคม 2561

④ เรียน... ประธานฝ่ายกิจกรรมนิสิต  
เพื่อโปรดพิจารณา

  
3 เม.ย. 61

Please find attached our general procedures, course offers for different periods of mobility (Full year, Autumn and Spring semester) and contacts for internship.

Note that several of our courses during the Spring Semester are entirely taught in English. If a student chooses these courses he/she will not need to prove any proficiency in French.

### More information

You will find all this information and more on our web site:

in English : <https://www.supagro.fr/web/en/pages/?idl=19&page=1374>

in French : <https://www.montpellier-supagro.fr/international/venir-etudier-montpellier-supagro/mobilite-academique-stage/venir-en-echange>

Please feel free to ask any question!

Best regards,

Dominique Louette

--



Mme Dominique LOUETTE

Responsable Mobilités Internationales

*Head of academic exchange and Erasmus institutional coordinator*

dominique.louette@supagro.fr

33 (0)4 99 61 26 35

Montpellier SupAgro - Service relations internationales et langues

2 Place Pierre Viala - Bât 11 – F – 34 060 Montpellier Cedex 2

[www.supagro.fr](http://www.supagro.fr)

--

### 2 attachments



Information sheet - Montpellier SupAgro - mars 2018 - DL16mars18 DL20mars18.docx

50K



Montpellier SupAgro Academic Exchange - Procedures-Courses-Internship - DL28fev18 DL20mars18 - graph en.docx

1354K



# Montpellier SupAgro

## INFORMATION SHEET

### Institution Details

<b>Name of Institution</b>	Montpellier SupAgro Institut National d'Etudes Supérieures Agronomiques de Montpellier
<b>Erasmus Code</b>	F-MONTPEL 10
<b>Address</b>	2, Place Viala F-34060 Montpellier Cedex2 France
<b>Website</b>	English : <a href="https://www.supagro.fr/web/en">https://www.supagro.fr/web/en</a> French : <a href="https://www.montpellier-supagro.fr/">https://www.montpellier-supagro.fr/</a>
<b>Head of Institution</b>	Ms. Anne-Lucie Wack

### Mobility Contacts

<b>Head of Academic Exchanges Office and Bilateral Agreements Manager</b>	Ms. Dominique Louette <a href="mailto:dominique.louette@supagro.fr">dominique.louette@supagro.fr</a> + 33 4 99 61 25 36
<b>Contact Person for Erasmus+ Students / and students from North America</b>	Ms. Majja Miikkola <a href="mailto:majja.miikkola@supagro.fr">majja.miikkola@supagro.fr</a> +33 4 99 61 23 27
<b>Contact Person for students from Latin America and Asia</b>	Ms. Claudia Medina <a href="mailto:claudia.medina@supagro.fr">claudia.medina@supagro.fr</a> +33 4 99 61 27 29
<b>Homepage for Incoming Students</b>	English – <a href="https://www.supagro.fr/web/en/pages/?idl=19&amp;page=1374">https://www.supagro.fr/web/en/pages/?idl=19&amp;page=1374</a> French - <a href="https://www.montpellier-supagro.fr/international/venir-etudier-montpellier-supagro/venir-en-echange-academique">https://www.montpellier-supagro.fr/international/venir-etudier-montpellier-supagro/venir-en-echange-academique</a>

### Calendar

	Sept	Oct	Nov	Dec	Jan	Feb	Mar	Apr	May	Jun	Jul	Aug
French intensive courses												
Autumn semester courses September to January or March, according to the track												
French intensive courses												
Spring semester courses February to April or May, according to the track												
Internship can start at any time, must last less than 6 months												



Autumn semester  
courses



Spring semester courses



Internship

## Studying at Montpellier SupAgro

<b>Academic Calendar</b>	<p>The academic calendar extends from early September to the end of August.</p> <p>Autumn semester courses extend from early or mid-September to end of January or mid-March, depending on the track</p> <p>Spring Semester courses begin mid-January to early February and end late April or late May, depending on the track</p>
<b>Course Offers</b>	<p>English – <a href="https://www.supagro.fr/web/en/pages/?idl=19&amp;page=1374">https://www.supagro.fr/web/en/pages/?idl=19&amp;page=1374</a> - Exchange students Course Offers</p> <p>French - <a href="https://www.montpellier-supagro.fr/international/venir-etudier-montpellier-supagro/venir-en-echange-academique">https://www.montpellier-supagro.fr/international/venir-etudier-montpellier-supagro/venir-en-echange-academique</a> – Offre de cours</p>
<b>Teaching Languages</b>	Depending on courses: French and/or English
<b>French courses</b>	<p>French courses free of charge:</p> <ul style="list-style-type: none"><li>- 30 hrs the first fortnight of September or last fortnight of January</li><li>- 2hrs / week throughout the semester</li></ul> <p>More information:</p> <p>English: <a href="http://www.supagro.fr/web/en/pages/?idl=19&amp;page=1402">www.supagro.fr/web/en/pages/?idl=19&amp;page=1402</a></p> <p>French: <a href="https://www.montpellier-supagro.fr/international/venir-etudier-montpellier-supagro/langues/francais-langue-etrangere-fle">https://www.montpellier-supagro.fr/international/venir-etudier-montpellier-supagro/langues/francais-langue-etrangere-fle</a></p> <p>French Summer Camps Paying Courses (July and/or August):</p> <ul style="list-style-type: none"><li>- <i>Agri-Culture French Summer Course:</i> English - <a href="http://www.supagro.fr/web/en/pages/?idl=19&amp;page=1867">http://www.supagro.fr/web/en/pages/?idl=19&amp;page=1867</a> French - <a href="https://www.montpellier-supagro.fr/international/venir-etudier-montpellier-supagro/langues/campus-dete/agri-cultures">https://www.montpellier-supagro.fr/international/venir-etudier-montpellier-supagro/langues/campus-dete/agri-cultures</a></li><li>- <i>Language &amp; Culture French Summer Course:</i> English - <a href="http://www.supagro.fr/web/en/pages/?idl=19&amp;page=1825">http://www.supagro.fr/web/en/pages/?idl=19&amp;page=1825</a> French - <a href="https://www.montpellier-supagro.fr/international/venir-etudier-montpellier-supagro/langues/campus-dete/langue-culture">https://www.montpellier-supagro.fr/international/venir-etudier-montpellier-supagro/langues/campus-dete/langue-culture</a></li></ul>
<b>Other language courses</b>	English, Spanish and German: 1hr30/week, subject to available places
<b>Grading System</b>	<p>Credits are given in accordance with the ECTS System.</p> <p>The examinations are scored on the French rating system ("0" to "20", with "20" being the best and "10" being the minimum score to validate a course).</p>

## Training in a Joint Research Unit and Internship at Montpellier SupAgro

<b>Period</b>	<p>Internships can begin at any time of the year</p> <p>Internship may last from 2 to 6 months. Internships of more than two months are remunerated but more difficult to obtain.</p>
<b>Language requirements</b>	Proficiency is required in French or in English. In some cases, other languages can be accepted.
<b>Contacts</b>	<p>Students must choose the Joint Research Units (UMR) they are interested in and send a message to the contact person indicating the period they are interested in and the topics they would like to work on.</p> <p>List of UMR and internship contacts: <a href="https://www.montpellier-supagro.fr/sites/supagro/files/documents/2018/02/05/Come%20on%20exchange%20Montpellier%20SupAgro%20-%202018.pdf">https://www.montpellier-supagro.fr/sites/supagro/files/documents/2018/02/05/Come%20on%20exchange%20Montpellier%20SupAgro%20-%202018.pdf</a></p> <p>Consult the UMR websites:</p> <p>English: <a href="https://www.supagro.fr/web/en/pages/?idl=19&amp;page=1389">https://www.supagro.fr/web/en/pages/?idl=19&amp;page=1389</a></p> <p>French: <a href="https://www.montpellier-supagro.fr/recherche/dispositifs-de-recherche">https://www.montpellier-supagro.fr/recherche/dispositifs-de-recherche</a></p>

## Nomination and Application Procedures

<b>Requirements</b>	Official evidence student have completed at least 4 semesters of graduate studies for the tracks given at Florac Campus (B.Sc. 3 level) and 6 semesters for the other tracks  B1/B2 level in French and/or English depending on the selected courses
<b>Nomination and Application</b>	Nomination : please nominate your student by email. <a href="mailto:claudia.medina@supagro.fr">claudia.medina@supagro.fr</a> for Latin America or Asia <a href="mailto:maija.mikkola@supagro.fr">maija.mikkola@supagro.fr</a> for North America or Europe  Nominated students will receive an email with their login and password.  Application form and documents must be completed/uploaded ONLINE : ID-photo, ID-document, Transcript of records of higher education, Language certificates in French and/or English (depending on courses), Cover letter and Learning agreement.
<b>Deadlines for Application</b>	Full year or Autumn semester: <b>30<sup>st</sup> April</b> Spring semester: <b>15<sup>st</sup> October</b>

## Exchange related information

<b>Accommodation, Meals and more</b>	Résidence SupAgro: 50 Rue Croix de Las Cazes - 34000 Montpellier Mr. Marc ABOUCAL - <a href="mailto:residence@supagro.fr">residence@supagro.fr</a> - +33 4 99 61 24 76  Lunch at the campus restaurant under the same conditions as SupAgro students  More information: English - <a href="https://www.supagro.fr/web/en/pages/?idl=19&amp;page=1360">https://www.supagro.fr/web/en/pages/?idl=19&amp;page=1360</a> French - <a href="https://www.montpellier-supagro.fr/international/venir-etudier-montpellier-supagro/mobilite-academique-stage/venir-en-echange">https://www.montpellier-supagro.fr/international/venir-etudier-montpellier-supagro/mobilite-academique-stage/venir-en-echange</a>
<b>Insurance</b>	Students who do not have an EHIC (European Health Insurance Card) will have to take out French health insurance cover for the duration of their stay. An accident, personal and third party liability insurance is also compulsory (it can be taken along with the bank account at their arrival in France).
<b>Visa</b>	For non-European Students: English - <a href="https://www.supagro.fr/web/en/pages/?idl=19&amp;page=1421">https://www.supagro.fr/web/en/pages/?idl=19&amp;page=1421</a> French - <a href="https://www.montpellier-supagro.fr/international/venir-etudier-montpellier-supagro/votre-service/preparer-votre-arrivee-montpellier">https://www.montpellier-supagro.fr/international/venir-etudier-montpellier-supagro/votre-service/preparer-votre-arrivee-montpellier</a>
<b>Students with Special Needs</b>	Montpellier SupAgro offers the infrastructure to welcome students and staff with disabilities: English - <a href="https://www.supagro.fr/web/en/pages/?idl=19&amp;page=2180">https://www.supagro.fr/web/en/pages/?idl=19&amp;page=2180</a> French - <a href="https://www.montpellier-supagro.fr/vie-etudiante/campus-dynamiques/accessibilite-et-handicap">https://www.montpellier-supagro.fr/vie-etudiante/campus-dynamiques/accessibilite-et-handicap</a>

## Welcome events and Extra-Curricular Activities

Exchange students have the opportunity to participate to a wide range of sports and extra-curricular activities offered by Montpellier SupAgro and/or organized by the Student's Association.

Website of the Student's Association: It's not all about studying!

English - <https://www.supagro.fr/web/en/pages/?idl=19&page=1365>

French - <https://www.montpellier-supagro.fr/vie-etudiante/campus-dynamiques/vie-associative>

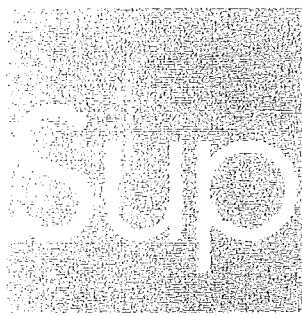
## Student Guides

**Mon guide, mon ami fidèle**, a guide written by and for students!

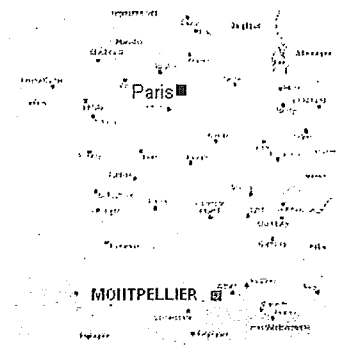
[https://www.montpellier-supagro.fr/sites/supagro/files/documents/2017/11/27/guide\\_2017.pdf](https://www.montpellier-supagro.fr/sites/supagro/files/documents/2017/11/27/guide_2017.pdf)

**The Practical Guide for International Students in Languedoc Roussillon**

<https://lanquedoc-roussillon-universites.fr/images/Accueil-international/PDF/Guide-EI-2017-GB.pdf>



Montpellier  
SupAgro



**FRANCE**



***COME ON EXCHANGE OR INTERNSHIP  
AT MONTPELLIER SUPAGRO***

**Education from B.Sc. to PhD level  
Research**

**International scientific and technical cooperation  
*in***

**Agricultural Sciences**

**Biological Sciences**

**Agri-Food Science**

**Environment**

**Rural Management**

# Montpellier SupAgro - France

## ACADEMIC EXCHANGE 2018-2019

English: <https://www.supagro.fr/web/en/pages/?id=19&page=1374>

French: <https://www.montpellier-supagro.fr/international/venir-etudier-montpellier-supagro/venir-en-echange-academique>

	Sept	Oct	Nov	Dec	Jan	Feb	Mar	Apr	May	Jun	Jul	Aug
<b>Autumn semester courses</b> from September to January or March, according to the track												
<b>Spring semester courses</b> from February to April or May, according to the track												
<b>Internship</b> can start at any time of the year, must last less than 6 months												

☐ Autumn semester  
courses

☒ Spring semester  
courses

☐ Internship

### Courses open to exchange students

Find below the course offers for students in international mobility, for **Full year**, **Autumn semester** or **Spring semester** mobility, or consult: <https://www.supagro.fr/web/en/pages/?id=19&page=1374> (English) - <https://www.montpellier-supagro.fr/international/venir-etudier-montpellier-supagro/mobilite-academique-stage/venir-en-echange> (French)

### Teaching language

Courses are taught either in French or in English depending on the selected courses. For more information, see course offers attached.

### Campuses

Most of the courses take place on the campus of Montpellier, some on the campus of Florac and 3 of them take place, according to the periods, in different cities of France.

### Language Courses

		ECTS	hours	Jul	Aug	Sept	Oct	Nov	Dec	Jan	Feb	Mar	Apr	May	Jun
Elective French Summer Courses	paying														
French Intensive Courses	free of charge	1 ECTS each semester	3 hours /day												
French weekly Courses	free of charge	Autumn 2 ECTS Spring 1 ECTS	2 hours /week												
English, German, Spanish and Portuguese*	free of charge	Autumn 2 ECTS Spring 1 ECTS	1,5 hours /week												

\* Portuguese: only during Autumn semester

» Elective French Summer Courses - Please note! Fees are due.

We offer two French Summer Programs in July and/or August:

- Agri-Culture Summer Course ([www.supagro.fr/web/en/pages/?id=19&page=1867](http://www.supagro.fr/web/en/pages/?id=19&page=1867)) (English) - <https://www.montpellier-supagro.fr/international/venir-etudier-montpellier-supagro/langues/campus-dete/agri-cultures> (French)
- Language & Culture Summer Course ([www.supagro.fr/web/en/pages/?id=19&page=1825](http://www.supagro.fr/web/en/pages/?id=19&page=1825)) (English) - <https://www.montpellier-supagro.fr/international/venir-etudier-montpellier-supagro/langues/campus-dete/langue-culture> (French)

» French Language Courses

**Free of charge** intensive French language courses, 2 weeks before the beginning of each semester, are followed by regular courses, the whole semester or year.

For more information see [www.supagro.fr/web/en/pages/?id=19&page=1402](http://www.supagro.fr/web/en/pages/?id=19&page=1402) (English) - <https://www.montpellier-supagro.fr/international/venir-etudier-montpellier-supagro/langues/francais-langue-etrangere-file> (French)

» Other Language Courses

Students can also choose to attend **free of charge** English, Spanish, German or Portuguese courses, subject to available places.



Exchange students can validate all or part of these credits. The number of ECTS credits for each course is indicated on the Course Offers documents and on the application forms.

#### • Bilateral Exchange Programs

International students are admitted through bilateral or multilateral exchange programs such as Erasmus+, Brafagri, Brafitec, Arfagri, Mexfitec and bilateral MOU.

#### • Academic Level

Depending on the course chosen, students should show official evidence that they have completed a minimum of 4 to 6 semesters of graduate studies before the beginning of their academic exchange. Please consult the specific information on each Track. The academic level and the prerequisites required will be taken into account in the analysis of the application files.

#### • Language Level

Students must have a **B1/B2 level in French or in English**, depending on the selected courses (contact us). No language proficiency is required for an internship.

#### • Application

Students should be **nominated by their home university by email**.

[claudia.medina@supagro.fr](mailto:claudia.medina@supagro.fr) for students from Latin America and Asia

[malja.miikkola@supagro.fr](mailto:malja.miikkola@supagro.fr) for students from North America and Europe

Each nominated student will receive an email with his(her) login and password for the completion of his (her) **application form ONLINE**: ID-photo, ID-document, Transcript of records of higher education, Language certificates in French and/or English, depending on courses, Cover letter and Learning agreement.

Deadline for application	Full Year or Autumn Semester	April 30th
	Spring Semester	October 15th

#### Application for an Internship at Montpellier SupAgro

Find specific information in the last session of this document about the **Joint Research Units (UMR)** where an internship can be done under certain conditions.

#### Welcome Events and Extra-Curricular Activities

The Students' Association works with the International Exchange Department to provide services and **welcome activities** for incoming international students:

- Pick-up service at the airport or train station
- Mentoring
- Informal arrival celebration and other integration activities...

Students are helped with **administrative tasks** such as visas, insurance, housing, bank account...

Exchange students have the opportunity to participate to a wide range of sports and extra-curricular activities offered by Montpellier SupAgro and/or organized by the Student's Association.

See the site of the Student's Association:

<https://www.supagro.fr/web/en/pages/?id=19&page=1365> (English) - <https://www.montpellier-supagro.fr/vie-etudiante/campus-dynamiques/vie-associative> (French)

#### Accommodation and Meals

Once accepted, students receive an application form for the booking of a room or a bedsit in one of Montpellier SupAgro's **student residence halls**, which are situated just across the road from La Gaillarde campus. Students are free to choose another type of accommodation in town.

Students can eat at the **campus restaurant** under the same conditions as the SupAgro students.

#### Lodging, Food, Transport, Visa & Miscellaneous

<https://www.supagro.fr/web/en/pages/?id=19&page=1360> (English) - <https://www.montpellier-supagro.fr/international/venir-etudier-montpellier-supagro/mobilite-academique-stage/venir-en-echange> (French)

*Mon guide, mon ami fidèle,*

[https://www.montpellier-supagro.fr/sites/supagro/files/documents/2017/11/27/guide\\_2017.pdf](https://www.montpellier-supagro.fr/sites/supagro/files/documents/2017/11/27/guide_2017.pdf) a guide written by and for students!

#### The Practical Guide for International Students in Languedoc Roussillon

<https://languedoc-roussillon-universites.fr/images/Accueil-international/PDF/Guide-EI-2017-GB.pdf>

**MONTPELLIER SUPAGRO 2017-2018:**  
**Track\* Offers for Incoming International Mobility**  
**FULL YEAR**

Sept	Oct	Nov	Déc	Jan	Fév	Mars	Avr	Mai	Juin	Juil	Août	Sept		
Towards Sustainable Agriculture Montpellier – 30 ECTS					Combine 1 <sup>st</sup> and 2 <sup>nd</sup> semester tracks									
Products, Processes and Companies Montpellier – 30 ECTS														
Sustainable Management of Natural Resources Montpellier – 30 ECTS														
Training in Research Unit – 12,5 ECTS			Training in Research Unit 12,5 ECTS											
Agroecology ** Montpellier – 21 ECTS													Internship 7 ECTS	
Plant Sciences ** Montpellier – 21 ECTS													Internship 7 ECTS	
Data Manager for environmental project ** Montpellier – 21 ECTS													Internship 7 ECTS	
Sustainable Development Policies and Strategies ** Montpellier – 21 ECTS					Internship 7 ECTS									
Agri-Food Montpellier – 21 ECTS					Internship 7 ECTS									
Agricultural and Food Systems in Southern Countries – DARS (Development) Montpellier – 21 ECTS								Internship 7 ECTS						
Agricultural and Food Systems in Southern Countries – IAS (Agrifood) Montpellier – 21 ECTS								Internship 7 ECTS						
Coordination of Projects in Environmental Education and Sustainable Development - Florac - 40 ECTS						Internship 20 ECTS								
Agricultural Management of Rural Natural Areas Florac - 40 ECTS						Internship 20 ECTS								
Water and Agriculture - (cycle and management of water in agrosystems) Montpellier - 52,5 ECTS						Internship 7,5 ECTS								
Water and Agriculture - (advanced methods for water management in agrosystems) Montpellier - 35 ECTS					Internship 25 ECTS									
Water and Society - (economy-sociology-management) Montpellier - 52,5 ECTS						Internship 7,5 ECTS								
Data science for Agronomy and Agri-Food Rennes/Montpellier - 30 ECTS					Internship 30 ECTS									
AgroTIC - Agro-Technologies of Information and Communication Montpellier/Bordeaux - 30 ECTS					Internship 30 ECTS									
Water, Cultivated Areas and Environment Management Montpellier - 40 ECTS					Internship 30 ECTS									
Agri-Food and Agro-Industry Montpellier - 30 ECTS					Internship 30 ECTS									
Agromanager Montpellier - 30 ECTS					Internship 30 ECTS									
Plant Breeding, Mediterranean and Tropical Crops Engineering Montpellier - 30 ECTS					Internship 30 ECTS									
Chemistry and Bio-Processes for Sustainable Development Montpellier - 30 ECTS					Internship 30 ECTS									
Livestock Farming Systems Montpellier - 30 ECTS					Internship 30 ECTS									
Sustainable Crop Production Montpellier - 30 ECTS					Internship 30 ECTS									
Plant Protection and Environment Montpellier/Rennes/Paris - 30 ECTS					Internship 30 ECTS									
Territories and Resources: Public Policies and Actors Montpellier - 30 ECTS					Internship 30 ECTS									
Economics of agricultural development, environment and food Montpellier - 30 ECTS					Internship 30 ECTS									
Agri-Food Industry in the South Montpellier - 30 ECTS					Internship 30 ECTS									
Markets, Organization, Food Quality, Services in the Southern Agriculture Montpellier - 30 ECTS					Internship 30 ECTS									
Resources and Agricultural Systems Development Montpellier - 30 ECTS					Internship 30 ECTS									

## How to Choose from the Full Year Track Offers?

### Tracks and Teaching Units

A Track corresponds to a line on the Track offers chart. Each Track is made up of several Teaching Units (UE). Each Track delivers 30 ECTS per semester. All the UE of the Track chosen must be attended

To attend the Tracks "Coordination of Projects in Environmental Education and Sustainable Development" and "Agricultural Management of Rural Natural Areas", students must have officially validated at least 4 semesters of graduated studies (120 ECTS). To attend all others Tracks, 6 semesters of graduated studies are required as a minimum.

Students must choose:

- one track (1 line on the chart) on Autumn semester (September-January) and one track on Spring semester (February-August) for the tracks that cover only part of the academic year, on the first part of the chart,
- or
- a unique Track (1 line on the chart) when it covers all the academic year.

For the Spring Tracks marked \*\* on the chart ("Agroecology", "Data Manager for environmental project", "Plant Sciences" and "Sustainable Development Policies and Strategies"), the Teaching Units can be combined, selecting 1 UE per period.

Period 1 (February) – 7 ECTS	Period 2 (March) – 7 ECTS	Period 3 (April) – 7 ECTS
UE1 - Discover Agroecology	UE2 - Agroecology Principal Concepts	UE3 - The Agroecological Transition
UE1 - Collecting Environmental Data	UE2 - Environmental Data Processing and Analysis	UE3 - Mobile and Web Management of Environmental Data
UE1 - Public Policies, Behaviours and Sustainable Development	UE2 - Life Cycle Analysis and Sustainable Consumption	UE3 - Sustainable Development Initiatives
UE1 - Designing New Crops for the Future	UE2 - Training in AGROPOLIS Research Community	UE3 - Evolutionary applications in agriculture : Evolutionary Concepts for the Management of Agro-Ecosystems

### Training in a Research Unit and Internship

Students can attend a **Training in a Research Unit** during the Autumn Semester before the beginning of the Spring semester courses. They will be offered a scientific project in a laboratory on the campus.

After the courses, depending on the Track, students can do a 2 to 6 month **Internship** in a laboratory or company. See more at the end of the document.

### Foreign Languages

- In July and/or August, **paying French Summer Courses** are offered for non-French speaking students.
- Throughout the year Montpellier SupAgro offers **free of charge Language Courses**:

French	For all international students, except French speaking students	<b>Intensive Courses:</b> 30 hrs (3 hrs/day) + <b>Regular Courses:</b> 2hrs/week throughout the semester	<i>Minimum admission level :</i> B1	1 ECTS + 2 ECTS Autumn semester + 1 ECTS Spring semester
English Spanish German	For students attending Tracks during the Spring semester	1hr30mins/week throughout the semester	<i>Admission level:</i> English: B1 to C1 Spanish / German: A0 to C1	2 ECTS Autumn semester + 1 ECTS Spring semester
Portuguese	For students attending Tracks during the Spring semester	1hr30mins/week throughout the semester	<i>Admission level:</i> Portuguese : A0	2 ECTS Autumn semester

Obs:

- Depending on their level in English, English courses are recommended during the first semester for students who wish to attend classes taught in English during the second semester.
- English courses are included in 5 Tracks of the Autumn semester: "Agri-Food and Agro-Industry", "Agromanager", "Plant Breeding, Mediterranean and Tropical Crops Engineering", "Coordination of Projects in Environmental Education and Sustainable Development" and "Agricultural Management of Rural Natural Areas".

**MONTPELLIER SUPAGRO 2017-2018:**  
**Track\* Offers for incoming international mobility**  
**AUTUMN SEMESTER**

Sept	Oct	Nov	Déc	Jan	Fév	Mars	Avr	Mai	Juin	Juil	Août	Sept
------	-----	-----	-----	-----	-----	------	-----	-----	------	------	------	------

Towards Sustainable Agriculture Montpellier - 30 ECTS												
Products, Processes and Companies Montpellier - 30 ECTS												
Sustainable Management of Natural Resources Montpellier - 30 ECTS												
Water and Agriculture (cycle and management of water in agrosystems) Montpellier - 30 ECTS												
Water and Agriculture (advanced methods for water management in agrosystems) Montpellier - 30 ECTS												
Water and Society (economy-sociology-management) Montpellier - 30 ECTS												
Water and Society (political science, law, history, geography) Montpellier - 30 ECTS												
Data science for Agronomy and Agri-Food Rennes/Montpellier - 30 ECTS												
AgroTIC - Agro-Technologies of Information and Communication Montpellier/Bordeaux - 30 ECTS												
Water, Cultivated Areas and Environment Management Montpellier - 30 ECTS												
Agri-Food and Agro-Industry Montpellier - 30 ECTS												
Agromanager Montpellier - 30 ECTS												
Plant Breeding, Mediterranean and Tropical Crops Engineering Montpellier - 30 ECTS												
Chemistry and Bio-Processes for Sustainable Development Montpellier - 30 ECTS												
Livestock Farming Systems Montpellier - 30 ECTS												
Sustainable Crop Production Montpellier - 30 ECTS												
Plant Protection and Environment Montpellier/Rennes/Paris - 30 ECTS												
Territories and Resources: Public Policies and Actors Montpellier - 30 ECTS												
Economics of agricultural development, environment and food Montpellier - 30 ECTS												
Agri-Food Industry in the South Montpellier - 30 ECTS												
Markets, Organization, Food Quality, Services in the Southern Agriculture Montpellier - 30 ECTS												
Resources and Agricultural Systems Development Montpellier - 30 ECTS												

 French

## How to Choose from the Autumn Semester Track Offers?

### Tracks and Teaching Units

A Track corresponds to a line on the Track offers chart. Each Track is made up of several Teaching Units (UE). Each Track delivers 30 ECTS per semester.

Students must choose one of the Tracks.

Students can attend a Track if they have officially validated at least 6 semesters of study (180 ECTS).

It is compulsory to attend all the Teaching Units of the chosen Track.

### Foreign Languages

- In July and/or August, paying **French Summer Courses** are offered for non-French speaking students.
- Throughout the year Montpellier SupAgro offers **free of charge Language Courses**:

French	For all international students, except French speaking students	<u>Intensive Courses:</u> 30 hrs (3 hrs/day) + <u>Regular Courses:</u> 2hrs/week throughout the semester	<i>Minimum admission level : B1</i>	1 ECTS + 2 ECTS
--------	---	--	-------------------------------------	-----------------------

English courses are included in 5 Tracks:

"Agri-Food and Agro-Industry",

"Agromanager",

"Plant Breeding, Mediterranean and Tropical Crops Engineering",

"Coordination of Projects in Environmental Education and Sustainable Development" and

"Agricultural Management of Rural Natural Areas".

**MONTPELLIER SUPAGRO 2017-2018:**  
**Track\* Offers for incoming international mobility**  
**SPRING SEMESTER**

Sept	Oct	Nov	Déc	Jan	Fév	Mars	Avr	Mai	Juin	Juil	Août	Sept
------	-----	-----	-----	-----	-----	------	-----	-----	------	------	------	------

Agroecology ** Montpellier - 21 ECTS	Internship 7 ECTS
---	----------------------

Plant Sciences ** Montpellier - 21 ECTS	Internship 7 ECTS
--	----------------------

Data Manager for environmental project ** Montpellier - 21 ECTS	Internship 7 ECTS
---	----------------------

Sustainable Development Policies and Strategies ** Montpellier - 21 ECTS	Internship 7 ECTS
--	----------------------

Agri-Food Montpellier - 21 ECTS	Internship 7 ECTS
------------------------------------	----------------------

Agricultural and Food Systems in Southern Countries - DARS (Development) Montpellier - 21 ECTS	Internship 7 ECTS
--	----------------------

Agricultural and Food Systems in Southern Countries - IAS (Agrifood) Montpellier - 21 ECTS	Internship 7 ECTS
--	----------------------

Water and Agriculture (cycle and management of water in agrosystems) Montpellier - 22,5 ECTS	Internship 7,5 ECTS
---	------------------------

Water and Society (economy- sociology management) Montpellier - 22,5 ECTS	Internship 7,5 ECTS
---	------------------------

 French

 English

 French and English

## How to Choose from the Spring Semester Track Offers?

### Tracks and Teaching Units

A Track corresponds to a line on the Track offers chart. Each Track is made up of several Teaching Units (UE). Each Track delivers 30 ECTS per semester.

To attend the Tracks "Coordination of Projects in Environmental Education and Sustainable Development" and "Agricultural Management of Rural Natural Areas ", students must have officially validated at least 4 semesters of graduated studies (120 ECTS). To attend all others Tracks, 6semesters of graduated studies are required as a minimum.

Students have two options:

- 1) choose one track (1 line on the chart) and attend all the Teaching Units;  
or
- 2) combine the Teaching Units (UE) of the tracks "Agroecology", "Data Manager for environmental project", "Plant Sciences" and "Sustainable Development Policies and Strategies" (marked \*\* on the chart), selecting 1UE per period.

Period 1 (February) – 7 ECTS	Period 2 (March) – 7 ECTS	Period 3 (April) – 7 ECTS
UE1 - Discover Agroecology	UE2 - Agroecology Principal Concepts	UE3 - The Agroecological Transition
UE1 - Collecting Environmental Data	UE2 - Environmental Data Processing and Analysis	UE3 - Mobile and Web Management of Environmental Data
UE1 - Public Policies, Behaviours and Sustainable Development	UE2 - Life Cycle Analysis and Sustainable Consumption	UE3 - Sustainable Development Initiatives
UE1 - Designing New Crops for the Future	UE2 - Training in AGROPOLIS Research Community	UE3 - Evolutionary applications in agriculture : Evolutionary Concepts for the Management of Agro-Ecosystems

### Internship

At the end of the Tracks, students can do a two month Internship in a laboratory or a company to validate 7 ECTS. See more on internships at the end of the document.

### Foreign Languages

Throughout the year Montpellier SupAgro offers *free of charge* Language Courses:

French	For all international students, except French speaking students	<u>Intensive Courses:</u> 30 hrs (3 hrs/day) + <u>Regular Courses:</u> 2hrs/week throughout the semester	Minimum admission level : B1	1 ECTS + 1 ECTS
English Spanish German	For all students	1hr30mins/week throughout the semester	Admission level: English: B1 to C1 Spanish / German : A1 to C1	1 ECTS

## MONTPELLIER SUPAGRO 2017-2018:

### INTERNSHIP

- International students can apply for a research internship in one of the 22 **Montpellier SupAgro Joint Research Unit (UMR)**.
  - Students must personally take steps to find the internship. For that, they should consult the list of the UMR, at the end of this document and/or consult the UMR websites <https://www.supagro.fr/web/en/pages/?idl=19&page=1389> (English) <https://www.montpellier-supagro.fr/recherche/dispositifs-de-recherche> (French)
  - Students should send a message to the contact persons of the chosen UMRs of interest, and indicate the period they are interested in and the topics they would like to work on.
  - your application may be accepted if your project is compatible with the work in progress and the availability of the targeted research teams.
- Internship can begin at any time of the year.
- Internship may last from 2 to 6 months. Internships of more than two months are remunerated but more difficult to obtain.
- Proficiency is required in French or in English. In some cases, other languages can be accepted.

## Montpellier SupAgro Joint Research Units (UMR) Contacts for Students Internships

### BE Department – Biology and Ecology

#### UMR AGAP – Genetic Improvement & Adaptation of Mediterranean and Tropical Plants

In order to create innovative breeding methodologies and plant material, AGAP research unit seeks to understand the factors of plant development and their adaptation to environmental constraints, analyses the organization and diversity of genomes and studies agrobiodiversity. It combines biological and social sciences to broaden the disciplinary base and better understand plant domestication. Genomics and genetics, bioinformatics, ecophysiology and mathematical modelling make it possible to study the relationships between genetic diversity, agronomic behaviour and response to selection. About twenty tropical and Mediterranean crops are studied in AGAP, covering a very wide range of biological characteristics and uses by farmers.

*Information:* <http://umr-agap.cirad.fr/en>

*Members:* Cirad, Inra, Montpellier SupAgro

*Contact:* [dominique.this@supagro.inra.fr](mailto:dominique.this@supagro.inra.fr)

*Internship offers:* <https://www.cirad.fr/en/jobs/internships>

#### UMR BGPI – Biology and Genetics of Plant/Parasite Interactions for Integrated Protection

The BGPI joint research unit aims at studying plant diseases with the goal of proposing rational control methods. The researchers of BGPI unit work on viruses, bacteria and fungi (including quarantine organisms) that are pathogenic to temperate and tropical plants. Population dynamics of emerging diseases, mechanisms of pathogenicity and plant resistance are the main investigated domains. Knowledge transfer for quarantine management of genetics resources is also a strong component of our activities.

*Information:* <http://umr-bgpi.cirad.fr/>

*Members:* Inra, Cirad, Montpellier SupAgro

*Contact:* [claire.neema@supagro.inra.fr](mailto:claire.neema@supagro.inra.fr)

#### UMR BPMP – Biochemistry and Molecular Physiology of Plants

The B&PMP joint research unit is defined as an Integrative Biology research department, focused on the mechanisms of plant responses and adaptation to variable abiotic environmental conditions.

*Information:* <https://www1.montpellier.inra.fr/wp-inra/bpmp/en/>

*Members:* Inra, CNRS, UM, Montpellier SupAgro

*Contact:* [pierre.berthomieu@supagro.fr](mailto:pierre.berthomieu@supagro.fr)

*Internship offers:* <https://www1.montpellier.inra.fr/wp-inra/bpmp/en/>



#### UMR CBGP - Centre for Biology and Management of Populations

The CBGP joint research unit aims to understand the mechanisms that govern populations of organisms that are important to agriculture, forests, human health and biodiversity conservation. Its studies concern biological models (arthropods, nematodes and rodents), and follow six lines of research: origin and characterization of biodiversity; adaptation of plant eaters, their natural enemies and symbionts; ecology and evolution of zoonoses; biology, ecology and evolution of invasive species; statistical and evolutionary population genomics; and high-throughput molecular and bioinformatics techniques

*Information:* [https://www6.montpellier.inra.fr/cbpg\\_eng/](https://www6.montpellier.inra.fr/cbpg_eng/)

*Members:* Cirad, Inra, IRD, Montpellier SupAgro

*Contact:* [marie-stephane.tixier@supagro.fr](mailto:marie-stephane.tixier@supagro.fr) - [serge.kreiter@supagro.fr](mailto:serge.kreiter@supagro.fr)

*Internship offers:* <http://www6.montpellier.inra.fr/cbpg/informations-pratiques/Offres-stages-theses-post-doc>

#### UMR LEPSE - Physiology Laboratory of Plants under Environmental Stress

The LEPSE joint research unit produces methods and knowledge to help maximizing crop production with less input, essentially water. This objective was initially assigned in the context of the necessity to limit water use by agriculture. Ongoing climate change, with global temperature elevation, increased probability of heat waves and drought episodes have led us to widen our domain of research.

*Information:* [https://www6.montpellier.inra.fr/lepse\\_eng/](https://www6.montpellier.inra.fr/lepse_eng/)

*Members:* Inra, Montpellier SupAgro

*Contact:* [anne.pellegrino@supagro.fr](mailto:anne.pellegrino@supagro.fr)

#### USC CEFE - Centre for Functional and Evolution Ecology (CEFE)

The CEFE is currently the largest French research center in Ecology. Its mission is to perform independent, fundamental scientific research on the dynamics of biodiversity, planetary environmental change, and sustainable development. The CEFE works at a great variety of field sites around the world, but developed particular expertise in Mediterranean and tropical ecosystems. One of its main objectives is to develop scenarios on the evolution of biological systems, as well as strategies for their conservation and their restoration.

*Information:* <http://www.cefe.cnrs.fr/fr/>

*Members:* UM, CNRS, UM 3, EPHE, Montpellier SupAgro

*Contact:* [elena.kazakou@supagro.fr](mailto:elena.kazakou@supagro.fr)

*Internship offers:* <http://www.cefe.cnrs.fr/fr/emploi-stage-2/offres-de-stages>

## MPRS Department - Soils, Water, Crops and Livestock Systems Department

#### UMR Eco&Sols - Functional Ecology & Biogeochemistry of Soils

The aim of the Eco&Sols joint research unit is to use ecological engineering to propose scientifically-based practices to maintain and improve the agricultural and environmental functions of agro-ecosystems. The research undertaken by Eco&Sols seeks to describe and understand the ecological processes of primary production and the regulation of the carbon and nutrient fluxes in the agro-systems.

*Information:* <http://www.umn-ecosols.fr/en/>

*Members:* Inra, Cirad, IRD, Montpellier SupAgro

*Contact:* [claire.marsden@supagro.fr](mailto:claire.marsden@supagro.fr)

#### UMR LISAH - Laboratory for the Study of Interactions between Soil, Agro-Systems and Water Systems

The LISAH joint research unit focuses its work on hydrology, the transfer of contaminants and erosion of highly developed and cultivated soils. It also studies the spatial proprieties of these areas, and their evolution. These studies aim at analyzing the issues of water and soils in cultivated areas.

*Information:* <https://www.umn-lisah.fr/?q=en>

*Members:* Inra, IRD, Montpellier SupAgro

*Contact:* [stephane.follain@supagro.fr](mailto:stephane.follain@supagro.fr) - [francois.colin@supagro.fr](mailto:francois.colin@supagro.fr) - [armand.crabit@supagro.fr](mailto:armand.crabit@supagro.fr)

#### UMR LSTM - Tropical and Mediterranean Symbioses Laboratory (LSTM)

The LSTM joint research unit studies microbiology and biology of plants, based on a multidisciplinary and integrative approach. It aims at understanding the molecular mechanism influencing the establishing of symbioses, as well as their role in ecosystematic services. It also studies the biodiversity of symbiotic microorganisms.

*Information:* <https://umn-lstm.cirad.fr/>

*Members:* UM, Cirad, IRD, Montpellier SupAgro

*Contact:* [brigitte.brunel@supagro.inra.fr](mailto:brigitte.brunel@supagro.inra.fr)

*Internship offers:* <http://umn-lstm.cirad.fr/offres-d-emploi-et-propositions-de-stages>

#### UMR SELMET - Livestock Systems in Tropical and Sub-Tropical Regions

The SELMET joint research unit works on animal production agro-ecosystems in warm climates, in normal and harsh conditions. The extreme conditions under which some of these systems function challenge the limits of ecological intensification.

*Information:* <http://umn-selmet.cirad.fr/en>

*Members:* Inra, Cirad, Montpellier SupAgro

*Contact:* [nathalie.agbagla@supagro.fr](mailto:nathalie.agbagla@supagro.fr) - [charles-henri.moulin@supagro.inra.fr](mailto:charles-henri.moulin@supagro.inra.fr)

#### UMR SYSTEM - Crop Systems Tropical and Mediterranean Cropping Systems Functioning and Management

The SYSTEM joint research unit produces knowledge and tools to assess and design cropping systems combining economic efficiency and the production of environmental services. In Mediterranean and tropical areas, it explores the hypothesis whereby the biological diversity of species cultivated in the same place fosters ecological intensification.

Information: <https://umr-system.cirad.fr/en>

Members: Cirad, Inra, Montpellier SupAgro, Ciheam-IAM

Contact: [aurelie.metay@supagro.fr](mailto:aurelie.metay@supagro.fr)

### SABP Department - Department of Sciences for Agro-Bio-Processes

#### UMR G-EAU - Water Management, Actors, Uses

The G-EAU joint research unit conducts researches on hydrosystems, from physical description to integrated water management; it contributes to the design and evaluation of facilities to develop innovating solutions and policies for improved water management. The unit is strongly involved in 'Water and Agriculture' and 'Water and Society' master programmes.

Information: <http://www.g-eau.fr/index.php/en/>

Members: IRSTEA, Cirad, IRD, AgroParisTech, Montpellier SupAgro

Contact: [gilles.belaud@supagro.fr](mailto:gilles.belaud@supagro.fr)

Internship offers: <http://www.g-eau.fr/index.php/en/jru-g-eau/recruitment>

#### UMR IATE - Agro-Polymer Engineering and Emerging Technologies

The IATE joint research unit generates knowledge regarding the structural-functional properties of plant-based products upon transformation to food, biomaterials, biomolecules and bioenergy.

Information: <https://umr-iate.cirad.fr/en>

Members: Inra, Cirad, UM, Montpellier SupAgro

Contact: [maeva.subileau@supagro.inra.fr](mailto:maeva.subileau@supagro.inra.fr)

#### UMR ITAP - Information and Technology for Agro-Processes

With the aim of developing equipment for a more sustainable agriculture and for services related to the environment, UMR ITAP develops the scientific and technical bases of the following topics: information and associated systems (optical measurements, decision support systems), eco-technologies for sustainable agricultural production (including equipment for crop protection and maintenance), environmental and social assessment based on life cycle assessments.

Information: <http://itap.irstea.fr/>

Members: IRSTEA, Montpellier SupAgro

Contact: [carole.sinfort@supagro.fr](mailto:carole.sinfort@supagro.fr)

Internship offers: [https://itap.irstea.fr/?page\\_id=59](https://itap.irstea.fr/?page_id=59)

#### UMR MISTEA - Mathematic, Computing & Statistic for Environment and Agronomy

The activities of the MISTEA joint research unit concern the development of mathematical, statistical and computer science methods dedicated to analysis and decision support for Agronomy and Environment, with particular emphasis on modeling, dynamical systems and complex systems.

Information: [https://www6.montpellier.inra.fr/mistea\\_eng/](https://www6.montpellier.inra.fr/mistea_eng/)

Members: Inra, Montpellier SupAgro

Contact: [benedicte.fontez@supagro.fr](mailto:benedicte.fontez@supagro.fr)

Internship offers: <http://www6.montpellier.inra.fr/mistea/Offres-de-stage-these-emploi>

#### UMR NUTRIPASS - Preventive malnutrition & associated pathologies

The NutriPass Joint Research Unit develops research on nutritional status as determinants and consequences, as well as on strategies and intervention policies. Its research is centered around issues which arise in the context of the nutrition transition and the dual burden of malnutrition (deficiencies and excesses) now affecting a majority of developing countries.

Information: <http://en.nutripass.ird.fr/>

Members: IRD, UM, Montpellier SupAgro

Contact: [nutripass@ird.fr](mailto:nutripass@ird.fr)

#### UMR QUALISUD - Integrated Quality Food System

The QUALISUD joint research unit aims at developing an integrated approach for production and preservation of products and food with optimum organoleptic, health and nutritional optimal qualities.

Information: <http://umr-qualisud.cirad.fr/en/the-research-unit>

Members: Cirad, UM, Université Avignon et des pays de Vaucluse, Montpellier SupAgro, Université de la Réunion

Contact: [manuel.dornier@cirad.fr](mailto:manuel.dornier@cirad.fr)

#### UMR SPO – Sciences for Ecology

The SPO joint research unit is one of the most important organizations involved in research in enology worldwide. It comprises 3 research teams: microbiology, biosynthesis and composition in polyphenols and polysaccharides (BCP2) and structures of phenolic (interactions, reactivity, assemblies) (SPIRAL). Close interactions with the INRA Experimental Unit of Pech Rouge-Narbonne (UE PR) allow the development of research projects up to pilot or pre-industrial scale and provide unique opportunities for innovation and transfer.

Information: [https://www6.montpellier.inra.fr/spo\\_eng/](https://www6.montpellier.inra.fr/spo_eng/)

Members: UM, Inra, Montpellier SupAgro

Contact: [bruno.blondin@supagro.fr](mailto:bruno.blondin@supagro.fr)

#### USC LBE – Laboratoire de Biotechnologie de l'Environnement

Les recherches conduites par l'USC LBE portent sur la valorisation par voie biologique des résidus issus de l'activité humaine selon le concept de la bioraffinerie environnementale et se déclinent en 4 axes transversaux renforçant la compréhension des mécanismes et la maîtrise des procédés :

- Diversité et Ingénierie des Ecosystèmes microbiens (DIEM)
- Matières complexes & Ingénierie des bioProcédés (MaXIP)
- Système, Analyse, Modélisation et Informatique (SAMI)
- Développement Technologique et Innovation (DTI)

Information: [https://www6.montpellier.inra.fr/narbonne\\_eng/](https://www6.montpellier.inra.fr/narbonne_eng/)

Members: Inra, Montpellier SupAgro

Contact: [sylvie.farine@inra.fr](mailto:sylvie.farine@inra.fr)

Internship offers: Narbonne - <http://www6.montpellier.inra.fr/narbonne/Offres-de-these-stage-emploi>

## SESG Department - Sciences Economiques, Sociales et de Gestion

#### UMR INNOVATION – Innovation and Development in Agriculture and Agri-Food Sector

The mission of the INNOVATION joint research unit is to inform private and public actors' decision-making by producing knowledge on the processes of innovation and development in agricultural and food systems. Its research focuses on innovation processes, ranging from understanding the objectives of the actors wanting to innovate to analyzing innovations' impact on development. Its research also covers the methods required to support the actors who innovate.

Information: <https://umr-innovation.cirad.fr/en>

Members: Cirad, Inra, Montpellier SupAgro

Contact: [stephane.de-tourdonnet@supagro.inra.fr](mailto:stephane.de-tourdonnet@supagro.inra.fr)

#### UMR CEE-M – Center of Environmental Economics- Montpellier

The LAMETA joint research unit aims at developing a plurality of works through specific tools (Market Econometrics, behavioral economics, experimental economics, public economics, history of economics thought, micro economy, social economy, game theory). The targeted areas are as follow: Risks, preferences and behaviors; Public decision, collective actions and social ethic; Competition, regulations and network industry and finally Environment, natural resources and biodiversity.

Information: <http://www.cee-m.fr/>

Members: Inra, CNRS, UM, Montpellier SupAgro

Contact: [pauline.lecole@supagro.fr](mailto:pauline.lecole@supagro.fr)

#### UMR MOISA – Markets, Organizations, Institutions and Actors' Strategies

The MOISA joint research unit studies issues related to the strategies implemented by the different actors, private or public, individuals (consumers) or collectives (social groups of market or non-market production), to their internal mode of communication (enterprises) or external (vertically or horizontally), and to the functioning of institutions (markets, laws), which are applied to food science and rural agricultural systems in the Mediterranean and tropical areas.

Information: <http://umr-moisa.cirad.fr/>

Members: Cirad, Inra, CIHEIAM-IAMM, Montpellier SupAgro

Contact: [Lucie.sirieux@supagro.fr](mailto:Lucie.sirieux@supagro.fr)

Internship offers: <http://umr-moisa.cirad.fr/offres-stages-theses-post-doc>

#### USC GRED – Gouvernement, Risque, Environnement, Développement

Quatre axes structurent à présent l'USC GRED:

- Biodiversités et sociétés
- Gouvernance des ressources et des territoires - Pluralité des règles, des acteurs et des espaces de décision
- Risques, transports et vulnérabilités des territoires
- Modélisation et représentations spatiales pour l'aide à la décision en aménagement

De nouvelles actions transversales ont été identifiées, au niveau des thématiques (conflits et accès aux ressources, politiques publiques) et/ou des chantiers relatifs à des milieux spécifiques (forêts, milieux littoraux et insulaire), ou encore des pays ou région (Maghreb, Afrique de l'Ouest) qui permettent des collaborations et dynamiques trans-axes.

Information: <http://www.gred.ird.fr/>

Members: IRD, UM3, Montpellier SupAgro

Contact: [pascale.maizi@supagro.fr](mailto:pascale.maizi@supagro.fr) - [marie-jeanne.valony@supagro.fr](mailto:marie-jeanne.valony@supagro.fr)



Comité

Vice

Latin America and Asia

Ms. Claudia Medina  
[claudia.medina@supagro.fr](mailto:claudia.medina@supagro.fr)  
 +33 (0)4 99 61 27 29

European Union and North America

Ms. Maija Miikkola  
[maija.miikkola@supagro.fr](mailto:maija.miikkola@supagro.fr)  
 +33 (0)4 99 61 23 27

Exchange programs

Ms. Dominique Louette  
[dominique.louette@supagro.fr](mailto:dominique.louette@supagro.fr)  
 +33 (0)4 99 61 26 35

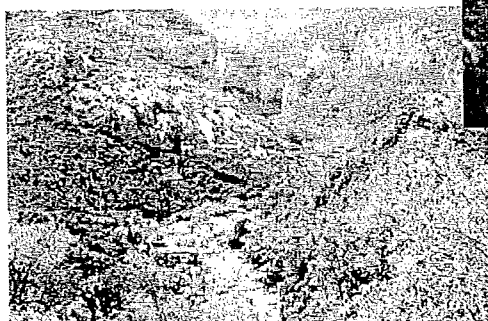
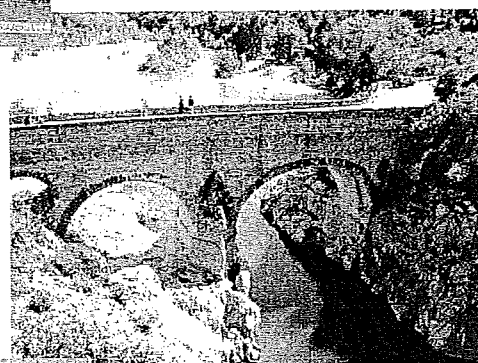
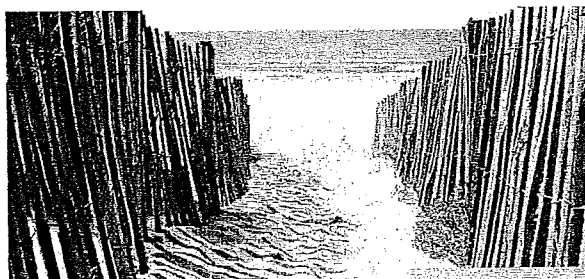
Montpellier SupAgro

Service des Relations Internationales  
 et Langues (SRIL)

2 place Viala  
 Bâtiment 11  
 34 060 Montpellier cedex 2  
 France

For more information, visit the official website:

[www.supagro.fr/web/en/](http://www.supagro.fr/web/en/) (English)  
<https://www.montpellier-supagro.fr/> (French)



## Memorandum of Understanding

---

Between

The « Institut National d'Etudes Supérieures Agronomiques de Montpellier »,  
Etablissement public à caractères scientifique, culturel et professionnel,

Hereinafter referred to as "**Montpellier SupAgro**"

2, Place Viala, 34060 Montpellier cedex 2, France

Represented by its managing director, **Anne-Lucie Wack**,

**For one part,**

Kasetsart University

Hereinafter referred to as "**Kasetsart University**"

50 Ngamwongwan Road, Ladyao, Chatuchak, Bangkok 10900, Thailand

Represented by its Acting President, **Chongrak Wachrinrat**, PhD

**For the other part,**

The undersigned recite as follows:

Montpellier SupAgro, France, is a public postgraduate institute which has a specific mandate for training students and professionals in rural development agronomy and food sciences. Montpellier SupAgro is associated to others Institutes and Research Centres which are represented in Agropolis Montpellier. Montpellier SupAgro is member of IAVFF Agreenium the French Institute in Agronomy Veterinary and Forestry Sciences.

Kasetsart University is a public-autonomous university, established on February 2, 1943 with the primary aim of promoting subjects related to agricultural sciences. The University offers various



degrees in agriculture, agro-industry, business administration, economics, education, engineering, fisheries, forestry, humanities, science, social sciences, veterinary science, and maritime, as well as other training and tailor-made programs. Kasetsart University has seventeen research stations, four student training stations, four veterinary teaching hospitals throughout the country and more than 300 institutional agreements worldwide.

Montpellier SupAgro, France and Kasetsart University, Bangkok, Thailand have signed a memorandum of understanding (MOU), dated 27 February 2008, which was automatically renewed for an additional period of five years into 2013.

To undertake an effort to implement future close collaborative academic activities, the Kasetsart University and Montpellier SupAgro, wish to continue the framework agreement for specific exchanges of students and staff members in the following areas of cooperation:

## **Article 1: Object of the agreement**

This agreement is intended to define the general collaboration framework between Montpellier SupAgro and Kasetsart University.

The aim of this collaboration is the induction of cooperation in the fields of education, research and training.

## **Article 2: Areas of collaboration**

The areas of collaboration envisaged between the signatories of this agreement are as follows:

### **2.1 – Education / continuing education**

#### **2.1.1 Instructor exchanges**

The signatories facilitate instructor and contributor exchanges and instructor training. These exchanges are made within the framework of the development and implementation of the initial training programmes, the Masters curriculum, doctoral training or continuing education organized through collaboration between the two institutions with or without partner institutions.

#### **2.1.2 Student exchanges**

The signatories facilitate exchange of students including academic exchanges and degree exchanges at bachelor, masters, PhD or post doc level. Moreover, both institutions seek to develop opportunities for field training or laboratory placements for students exchanged and to organize the supervision of these placements by their staff and / or by third parties within the framework of the collaboration programmes.

All participants, instructors and students involved in the different exchange programmes will purchase health insurance and liability and repatriation insurance.

### **2.1.3 Curriculum lessons**

The signatories intend to jointly facilitate, with or without partner institutions, projects to create training courses.

The signatories intend to facilitate organization or support refresher courses and / or refresher training as part of continuing education.

### **2.2 Communication and scientific and technical information**

The signatories agree to inform each other of any reciprocal training programmes and partnership opportunities with third parties.

The signatories undertake to present this partnership in their institutional communication media.

### **2.3 Research - Development and Technology Transfer**

The signatories will hold any scientific event of common interest to exchange viewpoints, methodologies and develop research and thus contribute to the renewal of reflection and the improvement and dissemination of knowledge.

The signatories will seek to develop collaborative research and experimentation with or without the collaboration of third parties.

The signatories agree to facilitate the exchange of technology transfer practices and entrepreneurship and build common actions in this area.

## **Article 3 – Implementation**

### **3.1 Funding**

To formulate, prepare, implement and develop their collaborative projects, the signatories agree to seek jointly or separately, the support of financial partners, or inform each other on existing funding opportunities.

### **3.2 Draft project**

The institution at the origin of an operation or an activity shall undertake the submission of a draft project defining:

- The nature of the operation
- The objectives
- The necessary logistics
- The proposed funding

### **3.3 Special agreements**

If the proposed operation entails the approval of the partner, the procedures for implementation are developed jointly and will give rise to a special agreement that refers to this framework agreement. Each individual agreement will specify in particular:

- The purpose of the operation
- The duration

- The shared resources for the action chosen, the organizational framework in which collaboration takes place
- The identification of those responsible for the implementation of the action
- The ownership and the terms of exploitation of the results

### 3.4 Follow-up committee

A follow-up committee will be established comprising at least two representatives from each institution. It will aim to identify the areas and the priorities for the development of the collaboration, to guide the partnerships and to evaluate the programmes and the actions. It will produce an annual summary of activities carried out under the framework agreement. It will meet at least once a year, physically or by videoconference.

## Article 4 - Intellectual property

Both parties shall remain the owner of their own technologies, methods and information utilised in the implementation of the partnership. The use of the results and the educational resources produced in the partnership is within the framework agreement, according to modalities agreed between the partners contributing to their production. Each party is bound by confidentiality on all data and all results resulting from the partnership. Ownership and exploitation of the results will be determined by the special agreements.

## Article 5 - Validity-Denunciation

This framework agreement takes effect after its signing by the legal representatives of each party and after approval of the authorities provided in the regulations, applicable to each of them. It is applicable for a period of five years. Any amendment must be made by codicil.

It may be terminated at any time by either party by informing the other party and by giving a six-month notice period without prejudicing the completion of any ongoing operations.

This Agreement will be renewed automatically unless either or both parties express in writing their intention to withdraw from the cooperation, subject to 6 months' notice.

Original made in duplicate.

For Montpellier SupAgro,  
Director General

Date: 27/4/2016



SupAgro  
Anne-Lucie Wack

For Kasetsart University,  
Acting Vice President for Research  
Date:



Siree Chaiseri